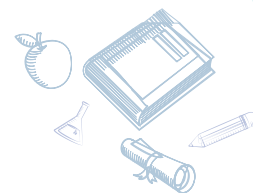




ALIANZA EIS CYPRESS INSTRUCTIONAL

CALENDAR 2023-2024

**Camp****Special Event****Student Holiday****Staff
Development****First/Last Day of
School****P/T Conferences****20
23****AUGUST**

S	M	T	W	T	F	S
			1	2	3	4
6	7	8	9	10	11	12
13	14	15	16	17	18	19
20	21	22	23	24	25	26
27	28	29	30	31		

**20
23****SEPTEMBER**

S	M	T	W	T	F	S
					1	2
3	4	5	6	7	8	9
10	11	12	13	14	15	16
17	18	19	20	21	22	23
24	25	26	27	28	29	30

**20
23****OCTOBER**

S	M	T	W	T	F	S
1	2	3	4	5	6	7
8	9	10	11	12	13	14
15	16	17	18	19	20	21
22	23	24	25	26	27	28
29	30	31				

**20
23****NOVEMBER**

S	M	T	W	T	F	S
				1	2	3
5	6	7	8	9	10	11
12	13	14	15	16	17	18
19	20	21	22	23	24	25
26	27	28	29	30		

**20
23****DECEMBER**

S	M	T	W	T	F	S
					1	2
3	4	5	6	7	8	9
10	11	12	13	14	15	16
17	18	19	20	21	22	23
24	25	26	27	28	29	30
31						

**20
24****JANUARY**

S	M	T	W	T	F	S
	1	2	3	4	5	6
7	8	9	10	11	12	13
14	15	16	17	18	19	20
21	22	23	24	25	26	27
28	29	30	31			

**20
24****FEBRUARY**

S	M	T	W	T	F	S
				1	2	3
4	5	6	7	8	9	10
11	12	13	14	15	16	17
18	19	20	21	22	23	24
25	26	27	28	29		

**20
24****MARCH**

S	M	T	W	T	F	S
					1	2
3	4	5	6	7	8	9
10	11	12	13	14	15	16
17	18	19	20	21	22	23
24	25	26	27	28	29	30
31						

**20
24****APRIL**

S	M	T	W	T	F	S
	1	2	3	4	5	6
7	8	9	10	11	12	13
14	15	16	17	18	19	20
21	22	23	24	25	26	27
28	29	30				

**20
24****MAY**

S	M	T	W	T	F	S
			1	2	3	4
5	6	7	8	9	10	11
12	13	14	15	16	17	18
19	20	21	22	23	24	25
26	27	28	29	30	31	

**20
24****JUNE**

S	M	T	W	T	F	S
						1
2	3	4	5	6	7	8
9	10	11	12	13	14	15
16	17	18	19	20	21	22
23	24	25	26	27	28	29
30						

**20
24****JULY**

S	M	T	W	T	F	S
	1	2	3	4	5	6
7	8	9	10	11	12	13
14	15	16	17	18	19	20
21	22	23	24	25	26	27
28	29	30	31			

IMPORTANT DATES**AUGUST**

AUG. 01ST-04TH SUMMER CAMP
AUG. 07TH - 11TH STAFF DEVELOPMENT
AUG. 14TH MEET THE TEACHERS
AUG. 15TH FIRST DAY OF SCHOOL

SEPTEMBER

SEPT. 4TH LABOR DAY / **NO SCHOOL**
SEPT. 26TH JOHNNY APPLESEED

OCTOBER

OCT. 09TH COLUMBUS DAY / **NO SCHOOL**
OCT. 13TH FALL FESTIVAL

NOVEMBER

NOV. 6TH-10TH PARENT TEACHER
CONFERENCES TODDLERS - PRESCHOOL
(1ST SEMESTER)
NOV. 17TH THANKSGIVING IN CLASSROOM
CELEBRATION
NOV. 21ST STAFF DEVELOPMENT / **NO SCHOOL**
NOV. 22ND - 24TH THANKSGIVING BREAK / **NO
SCHOOL**

DECEMBER

DEC. 08TH CHRISTMAS ASSEMBLY
DEC. 15TH PAJAMA DAY / LAST DAY OF SCHOOL
DEC. 18TH-22ND WINTER BREAK / CAMP
DEC. 25TH STUDENT / STAFF HOLIDAY
DEC. 26TH-29TH WINTER BREAK / CAMP

JANUARY

JAN. 1ST STUDENT / STAFF HOLIDAY
JAN. 2ND STAFF DEVELOPMENT / **NO SCHOOL**
JAN. 3RD CLASS RESUME
JAN. 15TH ML KING JR. DAY / **NO SCHOOL**
JAN. 19TH INTERNATIONAL DAY

FEBRUARY

FEB. 14TH VALENTINE'S DAY
FEB. 19TH PRESIDENTS DAY / **NO SCHOOL**
FEB. 23RD TEXAN DAY

MARCH

MAR. 01ST DR. SEUSS
MAR. 11TH-15TH SPRING BREAK / CAMP
MAR. 28TH EASTER CELEBRATION
MAR. 29TH GOOD FRIDAY / **NO SCHOOL**

APRIL

APR. 04TH-05TH-08TH PARENT TEACHER CONFERENCES
PRESCHOOL (2ND SEMESTER)
APR. 19TH EARTH DAY
APR. 26TH STUDENT LED CONFERENCE (**NO ACADEMIC DAY
JIRAFAS CLASSROOM**)

MAY

MAY 6TH-10TH TEACHER APRECIATION WEEK
MAY 10TH MOTHER'S DAY CELEBRATION
MAY 27TH MEMORIAL DAY / **NO SCHOOL**
MAY 30TH GRADUATION DAY
MAY 31ST LAST DAY OF SCHOOL

JUNE

JUNE 19TH JUNETEENTH / **NO SCHOOL**

JULY

JULY 4TH INDEPENDENCE DAY / **NO SCHOOL**